



MAHAJAN CONVEYOR INDUSTRIES

INFORMATION

Welcome to MAHAJAN CONVEYOR

In the complex world of business emulation, "Mahajan Conveyor" has known many twists, turns and diversification, but never has the signature of the marquee been lost. Since 1958, Mahajan's have been guided by the grand passion that has led them to indulge in the profitable business of "Rough top end" in the market. The updated carnation of "Gupta Rubber mill" has come into existence as "Mahajan Conveyor". The success of rechristened "Mahajan Conveyor" is very large due to fore vision and innovative strategies of Mahajan's who takes on the manufacturing, dealing and exporting the Rubber belt, transmission belt and with professionalism, extra ordinary self belief and commitment valued for the efficient management. The sublime vision of "Mahajan Conveyor" is based on the exhaustive study of modern conveyor's spectrum, collection and analysis of data and application of logic as well to evaluate the chances of profitable return against the potential risk. The principal concerns of Mahajan Conveyors are establishing the updated version of state of art infrastructure Quality conscious approach, timely delivery schedule and satisfaction of client. The specialization of Mahajan Conveyor lies in the "ROUGH TOP END AND HYGIENIC" and we always claim to proclaim "No compromise with quality and tryst the desires of clients as our priority". "MCI AND PR HINDUSTAN " is the name under which our deal of products takes place. We have our operational center located in kandori, himachal Pradesh . But the trading of "rough top end" product is dynamically extended unto national and international level.

≡ PRODUCTION INFRASTRUCTURE

As span infrastructure it is as beneficial will it be for the profitable outcome and flourishing business. “Mahajan Conveyor” has a prominent acquaintance as its infrastructure is armed with sincere, experienced and dynamic personnel recruitment, the high tech machinery and equipments for consistent production and the ideal quality managing authoritative staff that eminently performs with the assurance of accountability towards the clients and the super management of the company.



Length	Open or Endless
Ply	1 to 14 Ply
Thickness	2mm to 40mm
Types of Synthetic Carcass	General Duty (GD), extra duty (ED) & Heavy duty (HD)
Edges	Cut edge or Molded edge
Breaker Ply	Breaker is provided on the face, back & edges as per requirement
Fabric	Cotton/cotton, Cotton/Polyester & Synthetic Fabric like Nylon/nylon and Polyester/Nylone (EP), Polyester/Polyester (EE)(EH)

≡ ● UNMATCHED ADVANTAGES

A perfect combination of quality materials, modern technology, experience manpower and elaborate quality assurance measures, ensure that MAHAJAN conveyor belts have the following unmatched advantages

≡ ● HIGH ADHESION LEVELS

Special chemical bonding techniques ensure very high adhesion levels between cover to ply and ply to ply, achieving superior belt consolidation and higher peel resistance.

≡ ● OUTSTANDING IMPACT RESISTANCE

High adhesion levels and presence of thick rubber cushions between plies provides outstanding impact resistance and eliminates cover stripping and ply to ply desalination

≡ ● SUPERIOR TOUCHING & FLEXIBILITY

Higher transverse flexibility of MAHAJAN belts allows deeper touching, improving volumetric transfer capacity of conveyors. At the same time, higher long ideational flexibility allows use of smaller pulleys diameter and reduces flex fatigue

TRANSMISSION BELTS

Transmission Rubber Belts are suitable to the most demanding conditions of various industries such as textiles, paper, pharmaceuticals, Food processing, Engineering & other allied industries.

- **FLAT BELTS**
- **ROUND EDGE**
- **FOLDING EDGE**



- **LENGTH**
As per requirement till 200 meters

- **COLORS**
As per requirement

- **SIDE PAINTS**
Green, Red, Blue, Black, Silver

- **QUALITY MARKETING SCHEME**
 - Solid woven duck, cotton fabric ply
 - Lighter, stronger and more durable
 - Anti-abrasive
 - Less Elongation, by use of specially treated touch cotton cords
 - Uniform quality
 - High tensile strength
 - Modern testing facilities and equipped laboratory
 - Reduction in bearing load to light weight

Moulded



Cut edge

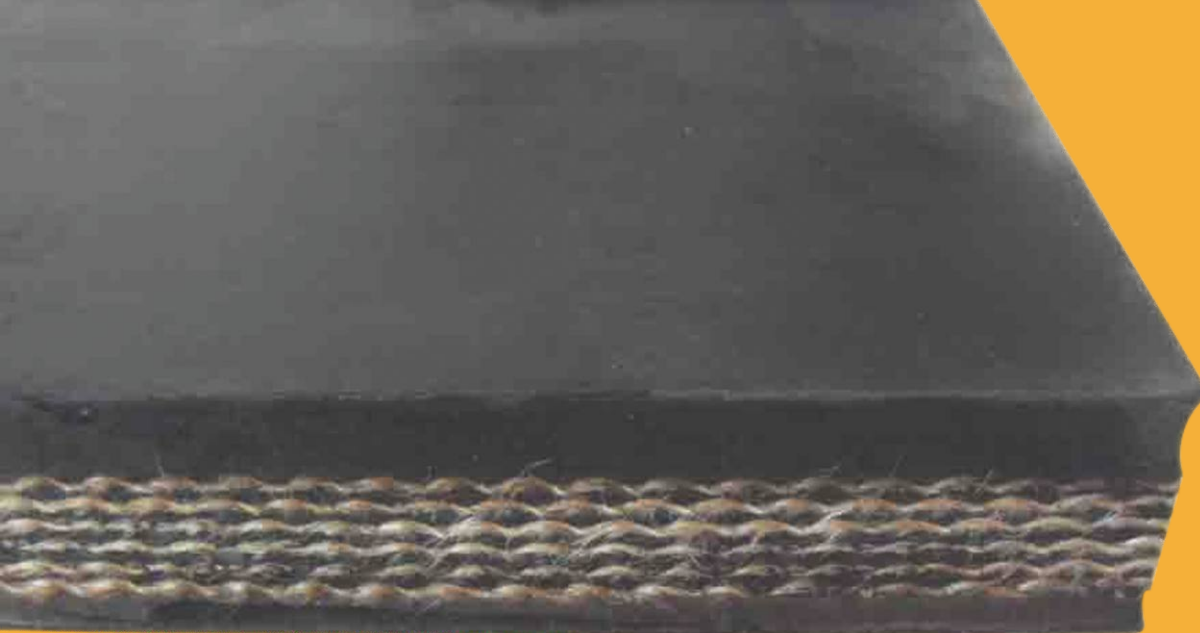




≡ NYLON CONVEYOR BELT

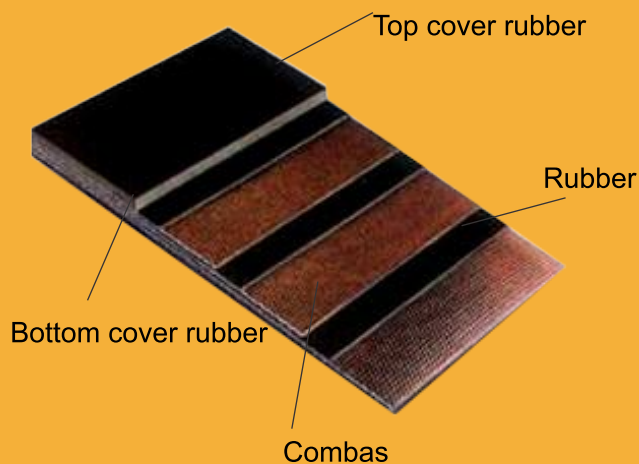
● Specification and technical data of multi-ply nylon conveyor belt

Fabric type	Fabric structure		Fabric type	Fabric Thickness (mm/p)	Strength series					Cover rubber Thickness		Width (mm)	Length (m)
	Warp	Weft			2ply	3ply	4ply	5ply	6ply	Upper	Lower		
Nylon (NN)	Nylon (N)	Nylon (N)	NN-100	0.45	200	300	400	500	600	0-10	0-10	100-2000	<400
			NN-150	0.65	200	450	600	750	900				
			NN-200	0.85	300	600	800	1000	1200				
			NN-250	1.05	400	750	1000	1250	1500				
			NN-300	1.25	500	900	1200	1500	1800				
			NN-350	1.45			1600	2000	2400				
			NN-400	1.65			2000	2500	3000				



≡ NYLON TO POLYESTER CONVEYOR BELT

Polyester conveyor belt also called EP conveyor belts, which tension resistant body is canvas that is woven by polyester in warp and Nylon in weft. The belts have the characteristics of low elongation in warp and good trough ability in weft, good water proof, good wet strength, no mould, suitable for medium, long-distance and heavy-load transportation of materials. Because of the high initial modulus of polyester, the belts can choose a relative low safety factor



≡● Specification and technical index of multi-ply EP conveyor belt

Fabric type	Fabric structure		Fabric type	Fabric Thickness (mm/p)	Strength series					Cover rubber Thickness		Width (mm)	Length (m)
	Warp	Weft			2ply	3ply	4ply	5ply	6ply	Upper	Lower		
Polyester (EP)	Nylon (E)	Polyester (P)	EP-100	0.45	200	300	400	500	600			100-2000	
			EP-150	0.65	300	450	600	750	900				
			EP-200	0.85	4300	600	800	1000	1200	0-10	0-10	100-2000	<400
			EP-250	1.05	500	750	1000	1250	1500				
			EP-300	1.25	600	900	1200	1500	1800				
			EP-350	1.45		1050	1400	1750	2100			100-2000	
			EP-400	1.65			1600	2000	2400				
06			EP-500	2.05			2000	25000	3000				

≡ PATTERNED & ROUGH TOP CONVEYOR BELTS

APPLICATION:

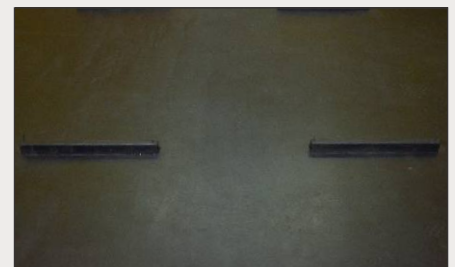
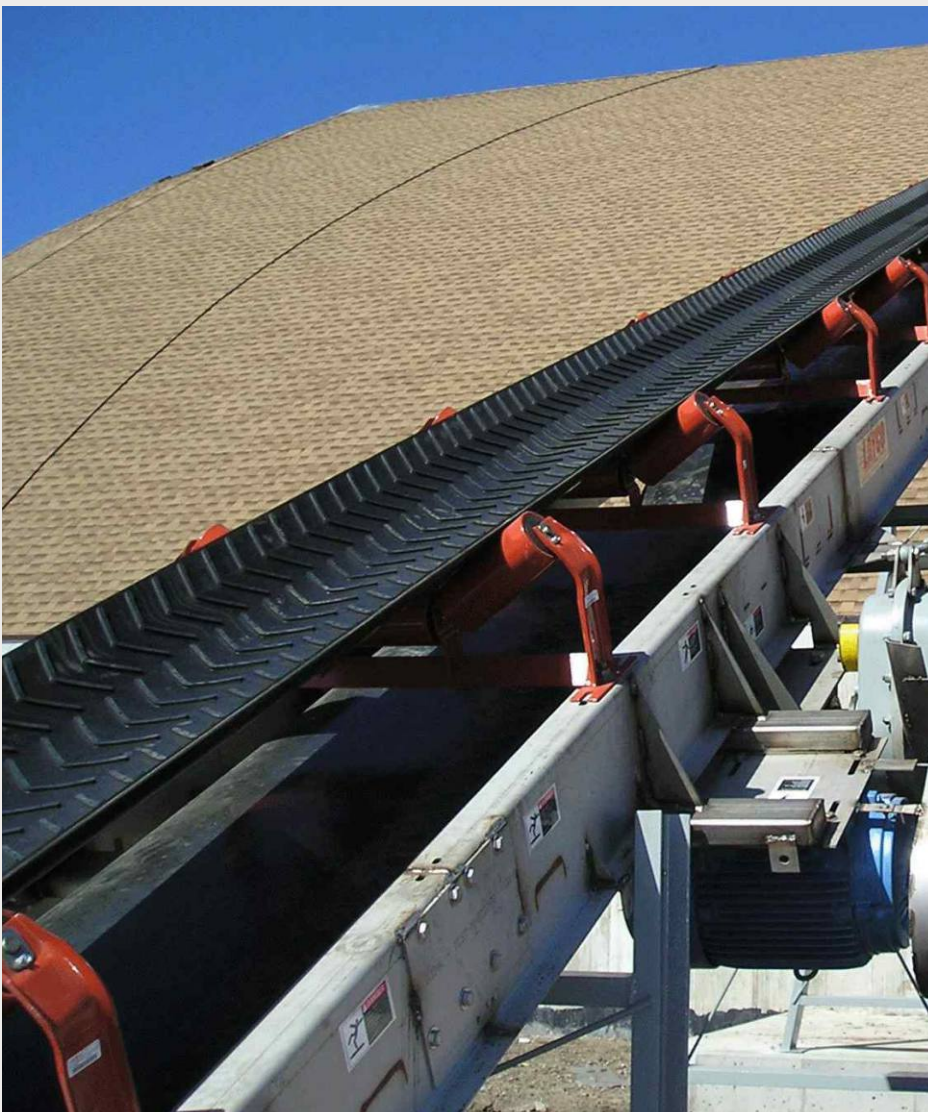
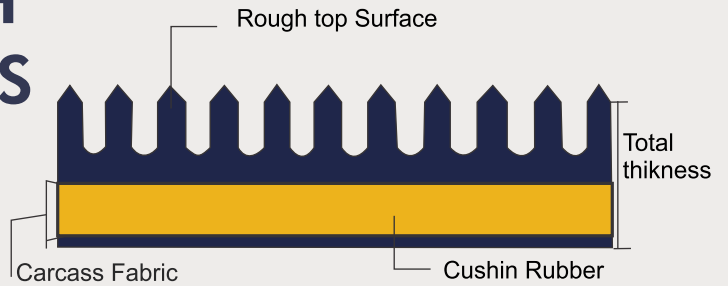
Rough Top belt is designed for transporting light weight goods, either being inclined or being horizontal, also suitable for transporting fragile or deformed materials and packed good, such as glass, papers, bags, boxes or cartons at angle from 15 to 45 degree.

To slope 0-45° to prevent materials from falling off, and to improve the capability of the belt.

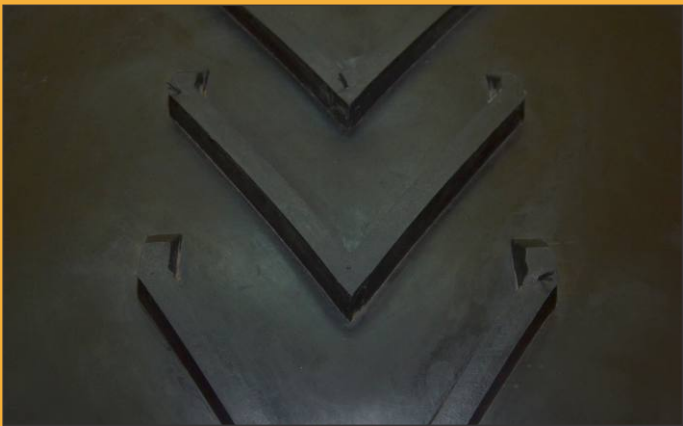
1. The material select cotton canvas or polyester canvas.

2. Production width: 300-1000 mm, layers.

Category: there are common, heat-proof, acid and alkali resistsnt and oil-resistant belts, categorized according the characteristics of cover rubber.



≡≡ V TYPE CHEVRON

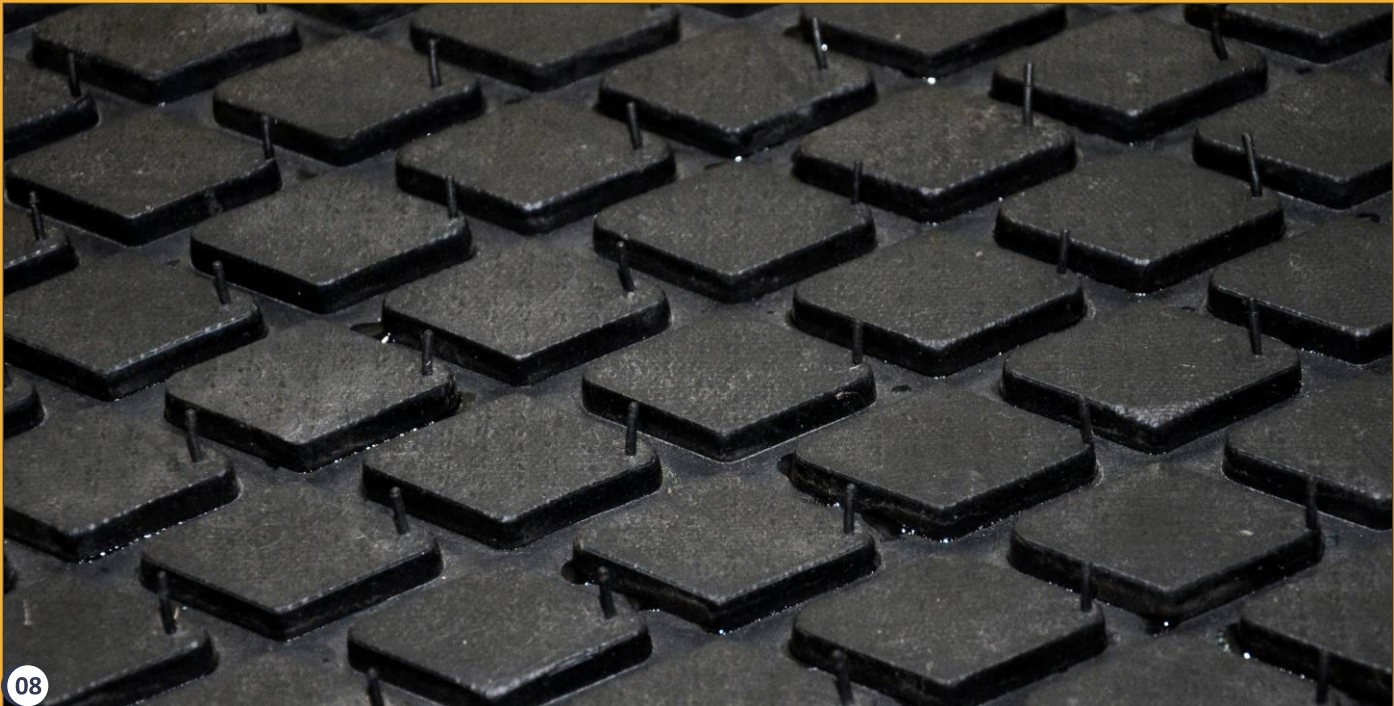


Cleat pitch	Cleat width	Belt width	Cleat Height
(CP) 185 mm	(CW) 210 mm	upto 550mm	17mm

Cleat pitch	Cleat width	Belt width	Cleat Height
200 mm	495mm	500 - 1000mm	17mm

≡≡ PULLEY LAGGING

Drum or pulley lagging are applied to drive pulleys to prevent belt slippage, reduce wear from abrasive materials and build-up of dirt in pulleys. Pulley lagging is a lagging of high quality that is mounted on the drive drum of rubber conveyor belt installations. Even in extremely wet and polluted circumstances, the high friction coefficient guarantees an excellent grip, maximizing the functionality of your conveyor. Next to characteristics such as high wear resistance, heavy duty design, insensitivity to humidity, long life expectancy, non-flammable, the operational temperature range between minus 40° and 120° degrees Celsius; it also offers the possibility to reduce the tensioning of the belt, increasing the life expectancy of the belt itself.



≡ ULTRA HEAT RESISTANT CONVEYOR BELT

The belt carcass is made of EP fabric which select high modulus, low shrink, and high breaking tensile strength canvas cover rubber of this product uses EPDM rubber that has very good high temperature resistance, The belt is made with mixing rubber with high temperature resistant materials after assembling and vulcanizing.

The carcass of this product has very high adhesion after the special treatment of coating and shaping, under normal working temperature of below 180°C, the belt is low in elongation, excellent shaping, under normal working temperature of below 180°C, the belt is low in elongation, excellent in anti-abrasion. and can bear 250°C high temperature for a short timothy belt is suitable for use in cement, metallurgical and steel industry.

● The physical performance of cover rubber after head-proof test conform to the specification in the table

Index		(Mode)			
		Model	Modell	Modelll	ModelV
		(variations range)			
Hardness	Difference after and before aging(IRHD)	20		+20	+20
	maximum after aging (IRHD)				
Tensile strength	Decrease of performance variance rate%<	-25	-30	-40	-40
	Maximum after aging Mpa	12	10	5	5
Elongation at break	Performance variance rate%	-50		-55	-55
	Maximum after aging%	200		180	180

For the production of conveyor belts with steel-cord or fabric layers Mahajan Conveyor Industries have recently installed a Press machine from a German manufacturer **Siempelkamp** in the year 2017. This 10 meter long walk in Press results in accurate thickness of the Conveyor belts. Moreover, high quality standards of this press results in best straight running stability despite heavy loads.



≡ OTHERS BELTS

Selection of rubber cover

Selection of rubber Should be done by taking into account the type and size of materials beconveyed and the operating condition of the belt. MAHAJAN standard rubber conveyor beltingis a available in the following grades.



APPLICATION	MATERIALS REFERENCE
Heat Resistance Belting HR(T-1)GRADE - suitable for transporting hot materials (up to 125 degree centigrade for coarse materials and 100 degree centigrade for fines) Heat Resistance Belting HR(T-2)GRADE - suitable for transporting hot materials (up to 150 degree centigrade for coarse materials and 125 degree centigrade for fines) Heat Resistance Belting SHR(T3) this belts are used for continues high temperature up to 180°C	Foundry sand, soda ash, Hot Limestone, Cement Clinker, Ash Handling, Hot Coker, Etc.
Oil Resistant Belting Good resistance to mineral, vegetable and animal oils and fats etc.	Soya Beans oil, Fish Oil, Coffee, Rice, Oil, etc
Hygienic conveyor belting These belts with food grade rubber covers so not import odor and do not stain the materials to be conveyed and thus are particularly suitable for food processing industries.	Tea, Tobacco, Salt Confectioneries, Fruit & Food processing etc.
FIRE Resistant(FR) Grade Recommended for use in coal such types of mines enveloped in fire. Rubber covers are fire resistant and antistatic	Coal, Coal sulphur, etc.
SHR+OR	Soya Beans oil, Fish Oil, Rice, etc

WHITE HYGIENIC CONVEYOR BELTING

We provide white food grade conveyor belts. It is suited for handling food materials directly on the belt surface. These belts are white in color and do not transfer any color to the food products.

We manufacture these belts in two grades one is in pure compound of nitrile which is best for food industry and other is Nitrile+PVC which is acid resistant, moisture resistant and very good abrasion resistant.

Most popular application includes Sugar, Fish, Cereals, Meat, Nuts, etc.



Fabric type	Fabric structure		Fabric type	Fabric Thickness (mm/p)	Strength series					Cover rubber Thickness		Width (mm)	Length (m)
	Warp	Weft			2ply	3ply	4ply	5ply	6ply	Upper	Lower		
Polyester (EP)	Nylon (E)	Polyester (P)	EP-100	0.45	200	300	400	500	600			100-1200	
			EP-150	0.65	300	450	600	750	900				
			EP-200	0.85	4300	600	800	1000	1200	0-10	0-10	100-1200	<400
			EP-250	1.05	500	750	1000	1250	1500				
			EP-300	1.25	600	900	1200	1500	1800				
			EP-350	1.45		1050	1400	1750	2100			100-1200	
			EP-400	1.65			1600	2000	2400				
			EP-500	2.05			2000	25000	3000				



SUGAR MILLS

STEEL
INDUSTRY

PAPER
INDUSTRY

WOOD &
CHIPBOARD

AIRPORTS

QUARRIES
& CRUSHERS

POWER
PLANTS

COALMINES

CEMENT
INDUSTRY

PORTS

MAHAJAN CONVEYORS

AD - 24, A - Ground Floor, next to, Power House, Pitampura, New Delhi - 110034
Ph: +11 273114176, E: info@mahajanconveyors.com, W: www.mahajanconveyors.com